



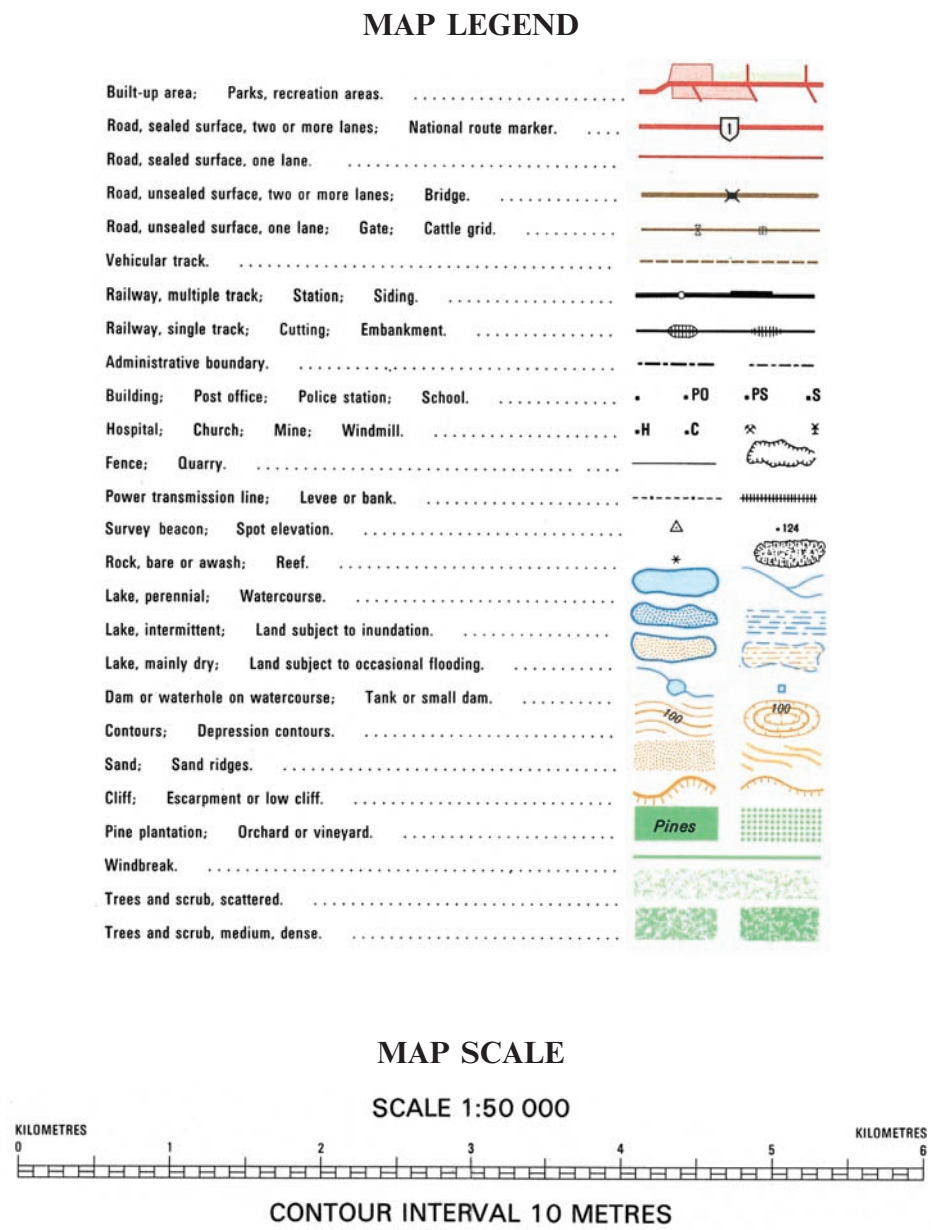
GEOGRAPHY
HIGHER LEVEL AND STANDARD LEVEL
PAPER 2 – RESOURCES BOOKLET

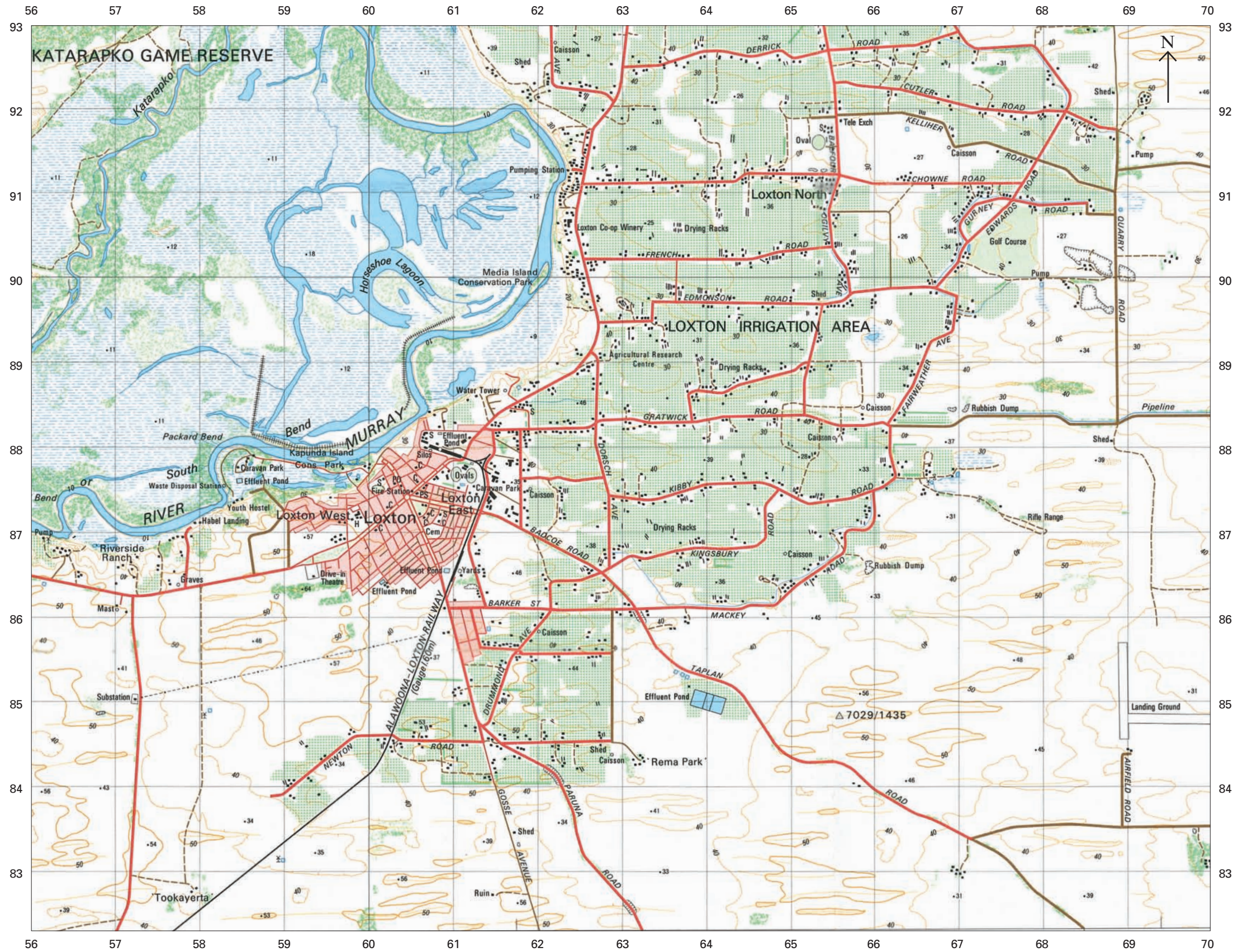
INSTRUCTIONS TO CANDIDATES

- Do not open this resources booklet until instructed to do so.
- Use the resources as appropriate to the questions in paper 2.

C11. Topographic mapping

The aerial photograph and map extract below show the area around Loxton, a town with a population of 7 000 on the Murray River in South Australia. The town is the centre of an agricultural area that specializes in the cultivation of grapes, citrus and other fruit under irrigation. The scale of the map extract is 1:50 000.

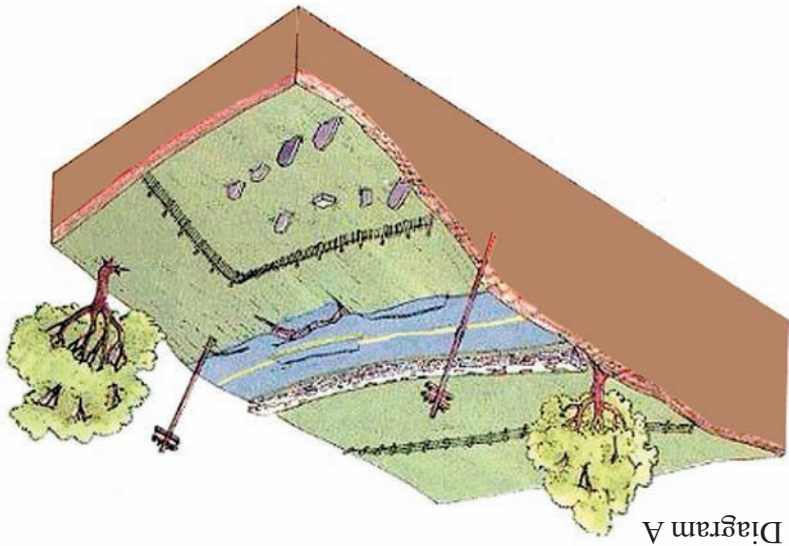




[Photography/Maps supplied by MAPLAND Environmental Information, Department for Environment and Heritage, South Australia]

A4. Lithospheric processes and hazards

(b) Diagrams A and B show two types of mass movement.



[Source: Earth Science Australia]

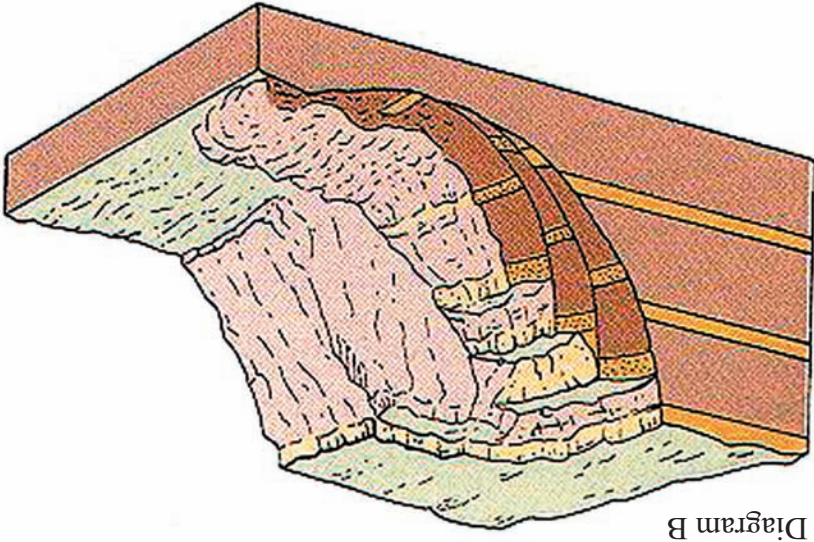
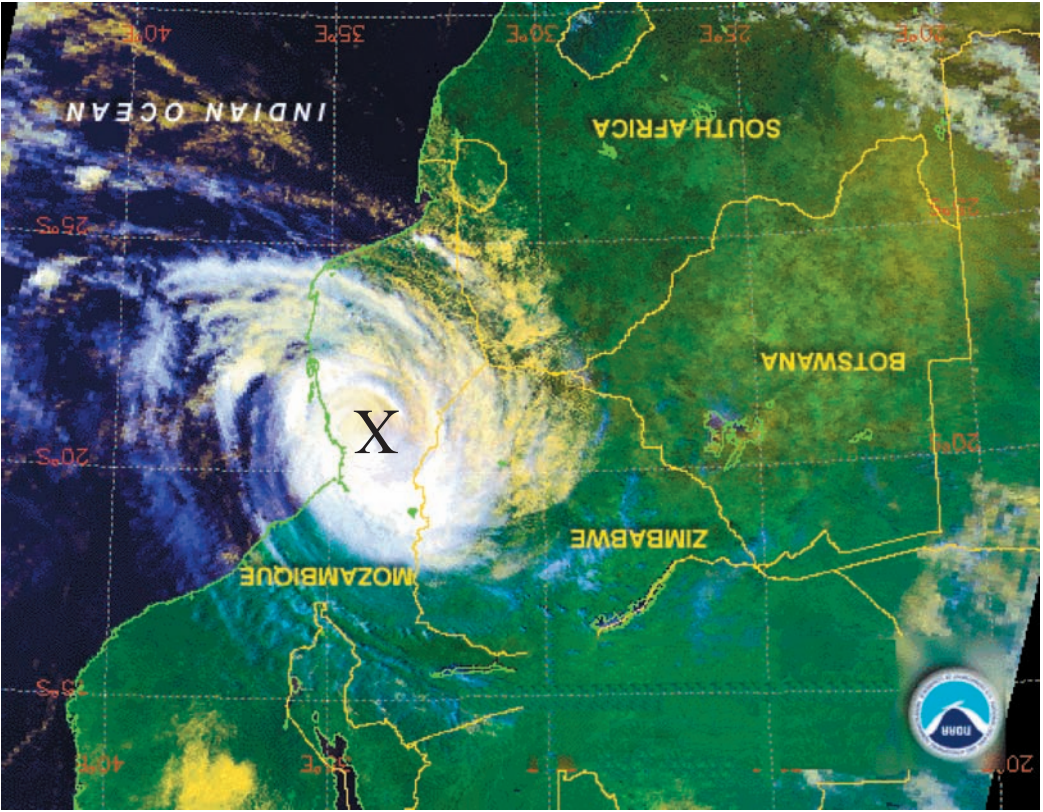


Diagram B

A6. Climatic hazards and change

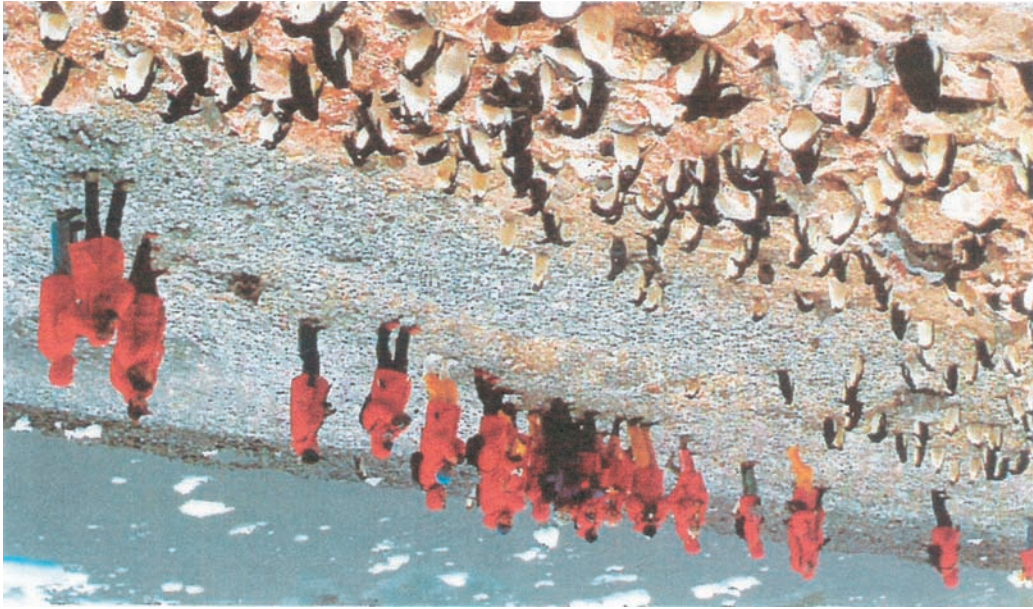
(b) The satellite image shows a major weather system over part of southern Africa.



Approximate scale: 1:16 000 000
[Source: NOAA Satellite and Information Service]

B10. Globalization

(b) The photographs show three types of holidays in remote destinations.



Photograph A – Antarctica Cruise

[Source: Geography Review 1997]



Photograph B – Annapurna Sanctuary Trek, Nepal

[Source: www.exploreworldwide.com]



Photograph C – Borneo 'Jungle Adventure'

[Source: www.exploreworldwide.com]