

No part of this product may be reproduced in any form or by any electronic or mechanical means, including information storage and retrieval systems, without written permission from the IB.

Additionally, the license tied with this product prohibits commercial use of any selected files or extracts from this product. Use by third parties, including but not limited to publishers, private teachers, tutoring or study services, preparatory schools, vendors operating curriculum mapping services or teacher resource digital platforms and app developers, is not permitted and is subject to the IB's prior written consent via a license. More information on how to request a license can be obtained from <https://ibo.org/become-an-ib-school/ib-publishing/licensing/applying-for-a-license/>.

Aucune partie de ce produit ne peut être reproduite sous quelque forme ni par quelque moyen que ce soit, électronique ou mécanique, y compris des systèmes de stockage et de récupération d'informations, sans l'autorisation écrite de l'IB.

De plus, la licence associée à ce produit interdit toute utilisation commerciale de tout fichier ou extrait sélectionné dans ce produit. L'utilisation par des tiers, y compris, sans toutefois s'y limiter, des éditeurs, des professeurs particuliers, des services de tutorat ou d'aide aux études, des établissements de préparation à l'enseignement supérieur, des fournisseurs de services de planification des programmes d'études, des gestionnaires de plateformes pédagogiques en ligne, et des développeurs d'applications, n'est pas autorisée et est soumise au consentement écrit préalable de l'IB par l'intermédiaire d'une licence. Pour plus d'informations sur la procédure à suivre pour demander une licence, rendez-vous à l'adresse suivante : <https://ibo.org/become-an-ib-school/ib-publishing/licensing/applying-for-a-license/>.

No se podrá reproducir ninguna parte de este producto de ninguna forma ni por ningún medio electrónico o mecánico, incluidos los sistemas de almacenamiento y recuperación de información, sin que medie la autorización escrita del IB.

Además, la licencia vinculada a este producto prohíbe el uso con fines comerciales de todo archivo o fragmento seleccionado de este producto. El uso por parte de terceros —lo que incluye, a título enunciativo, editoriales, profesores particulares, servicios de apoyo académico o ayuda para el estudio, colegios preparatorios, desarrolladores de aplicaciones y entidades que presten servicios de planificación curricular u ofrezcan recursos para docentes mediante plataformas digitales— no está permitido y estará sujeto al otorgamiento previo de una licencia escrita por parte del IB. En este enlace encontrará más información sobre cómo solicitar una licencia: <https://ibo.org/become-an-ib-school/ib-publishing/licensing/applying-for-a-license/>.

Design technology
Higher level and standard level
Paper 2

Thursday 5 November 2020 (afternoon)

Candidate session number

--	--	--	--	--	--	--	--	--	--

1 hour 30 minutes

Instructions to candidates

- Write your session number in the boxes above.
- Do not open this examination paper until instructed to do so.
- Section A: answer all questions.
- Section B: answer one question.
- Answers must be written within the answer boxes provided.
- A calculator is required for this paper.
- The maximum mark for this examination paper is **[50 marks]**.

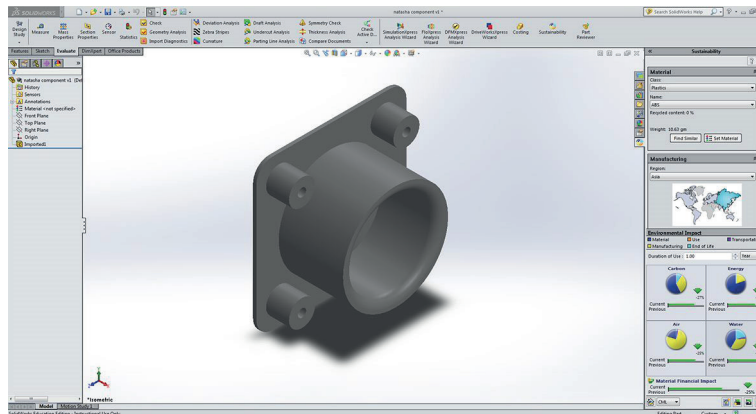


Section A

Answer **all** questions. Answers must be written within the answer boxes provided.

- Figure 1** shows design for environment software that can be used to analyse the environmental impact of a component using life cycle analysis (LCA).

Figure 1: Component in design for environment software



The software generates a sustainability report, see **Figure 2**. This can be used by designers and manufacturers to make informed choices regarding the environmental impact of the component.

Figure 2: Sustainability report for the component generated by the software

Material: ABS	Total mass per unit of ABS:	0.253 kg
	Material Unit Cost:	2.90 USD/kg
Manufacturing	Region:	Asia
	Process:	Injection Moulded
	Electricity consumption:	1.8 kWh/lbs
	Designed to last:	2.0 years
	Scrap rate:	2.0 %
Use	Region:	North America
	Duration of use:	2.0 years
End of Life	Recycled:	33 %
	Incinerated:	13 %
	Landfill:	54 %

(This question continues on the following page)



(Question 1 continued)

- (a) (i) State **one** reason why the product was designed to only last two years. [1]

.....
.....

- (ii) Outline **one** reason why using injection moulding has resulted in a low estimated material unit cost. [2]

.....
.....
.....
.....
.....
.....

(This question continues on the following page)



(Question 1 continued)

- (b) (i) Outline how finite element analysis (FEA) could be used to further develop the process during the component's manufacture by injection moulding. [2]

.....

.....

.....

.....

.....

.....

- (ii) Outline why solid modelling rather than surface modelling would have been used in the computer-aided design (CAD) development of the component designed in **Figure 1**. [2]

.....

.....

.....

.....

.....

.....

(This question continues on the following page)



(Question 1 continued)

- (c) (i) Outline **one** possible impact on the sustainability report in **Figure 2** if the material of the component is changed from a thermoplastic to a thermosetting plastic. [2]

.....

.....

.....

.....

.....

.....

- (ii) Explain **one** waste mitigation strategy the designer could use to reduce the percentage of ABS sent to landfill at the end of the product's life. [3]

.....

.....

.....

.....

.....

.....

.....

.....

.....

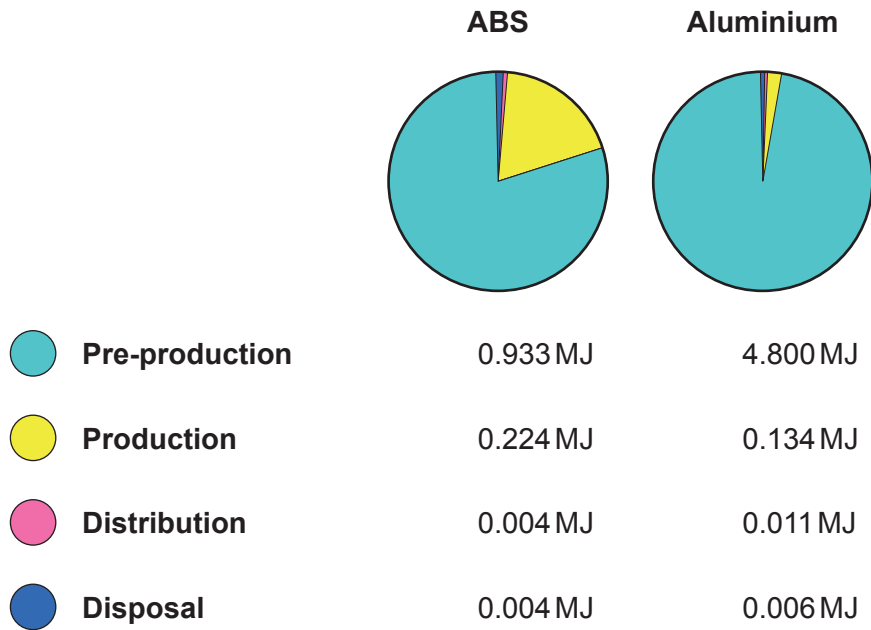
(This question continues on the following page)



(Question 1 continued)

Design for environment software can be used to calculate the energy consumed if the component was made from different materials. The pie charts in **Figure 3** show the energy consumed by ABS and aluminium at the pre-production, production, distribution and disposal stages of the product life cycle for the component. The unit of measurement of energy is megajoules (MJ).

Figure 3: Energy consumed during the lifecycle of the component for ABS and aluminium



- (d) (i) List **one** reason why the design for environment software does not generate a result for energy consumed at the utilization stage of the product lifecycle. [1]

.....

.....

(This question continues on the following page)



(Question 1 continued)

- (ii) Calculate the embodied energy of the component if it is made from ABS. Give your answer to one decimal point and show your workings. [2]

.....

.....

.....

.....

.....

.....

- (e) (i) Outline why the energy consumed at the pre-production stage is greater for aluminium than for ABS. [2]

.....

.....

.....

.....

.....

.....

- (ii) Explain how end-of-pipe technologies can reduce the environmental impact of manufacturing. [3]

.....

.....

.....

.....

.....

.....

.....

.....

.....



2. The Anglepoise lamp was originally designed in 1932 by George Carwardine and is considered a classic design. The Anglepoise lamp has undergone many iterations since 1932 and is now mass-produced as a modern consumer product, see **Figure 4**.

Many designers have been influenced by the Anglepoise lamp. *The Agency of Design*, a design company, set themselves a challenge to redesign the Anglepoise lamp by using the lowest possible embodied energy. The lamp is made from a hardwood structure with a bottle cork as an adjustment mechanism, see **Figure 5**.

Figure 4: A modern version of the Anglepoise lamp



Figure 5: *The Agency of Design* redesign



(This question continues on the following page)



(Question 2 continued)

- (a) Describe how the designer of the modern Anglepoise lamp in **Figure 4** has achieved a compromise between form and function. [2]

.....

.....

.....

.....

.....

.....

- (b) Outline **one** aesthetic characteristic of hardwood that makes it suitable for use in the redesigned Anglepoise lamp. [2]

.....

.....

.....

.....

.....

.....



- 3. With the growth in virtual reality (VR), augmented reality (AR) and mixed reality (MR)* there has been an increasing interest in virtual interaction design.

Mixed reality interfaces can be accessed by the user through wearing mixed reality glasses. The software maps the physical environment and matches the size of the virtual interface to the size of the user’s hand.

Figure 6 and **Figure 7** show a user interacting with virtual menus linked to physical objects in the environment.

Figure 6: Mixed reality interfaces

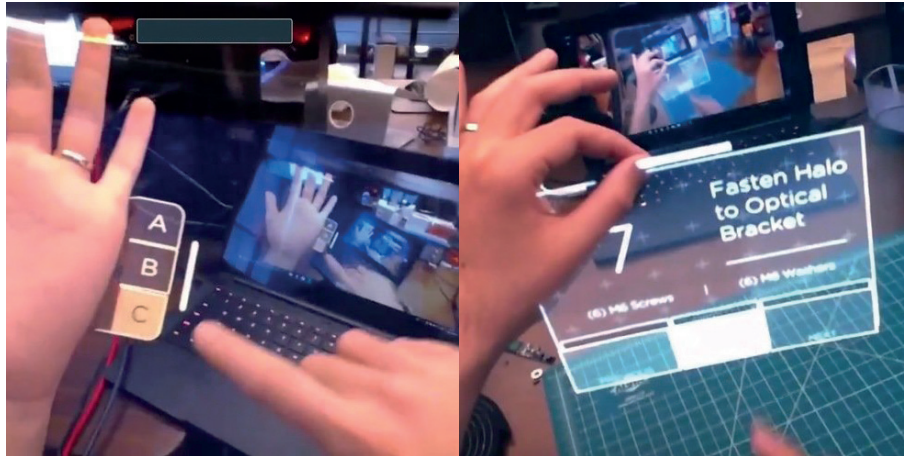


Figure 7: A user interacting with a mixed reality interface



* mixed reality (MR): overlays and anchors virtual objects to the real world

(This question continues on the following page)



(Question 3 continued)

Explain **one** physiological benefit to the user of interactions through a mixed reality interface instead of a physical interaction with the product.

[3]

.....

.....

.....

.....

.....

.....

.....

.....

.....

4. Explain why consumers of first to market technologies are likely to be innovators.

[3]

.....

.....

.....

.....

.....

.....

.....

.....

.....



Section B

Answer **one** question. Answers must be written within the answer boxes provided.

5.

Question 5 and figures 8, 9 and 10
removed for copyright reasons

(This question continues on the following page)



(Question 5 continued)

Question 5 and figures 8, 9 and 10
removed for copyright reasons

(This question continues on the following page)



24EP13

Turn over

(Question 5 continued)

Question 5 and figures 8, 9 and 10
removed for copyright reasons

(This question continues on the following page)



(Question 5 continued)

Question 5 and figures 8, 9 and 10
removed for copyright reasons



24EP15

Turn over

- 6. It is estimated that shipping is responsible for between 2 and 3 percent of the world's total greenhouse gas emissions. The United Nations' International Maritime Organization (UNIMO) has set targets for shipping companies to reduce their current emissions by at least 50 percent by 2050. In response to this requirement, designers are working on clean technologies to power large ships.

Rotor sails made from carbon glass fibre are one example of a clean technology. Rotor sails were first developed in the 1920s but interest in them was not revived until the early 21st century, see **Figure 11**.

Electricity powers a mechanism within the cylindrical rotor sail which provides the thrust to move the ship, see **Figure 12**.

Figure 11: Rotor sails from 1924 and 2018

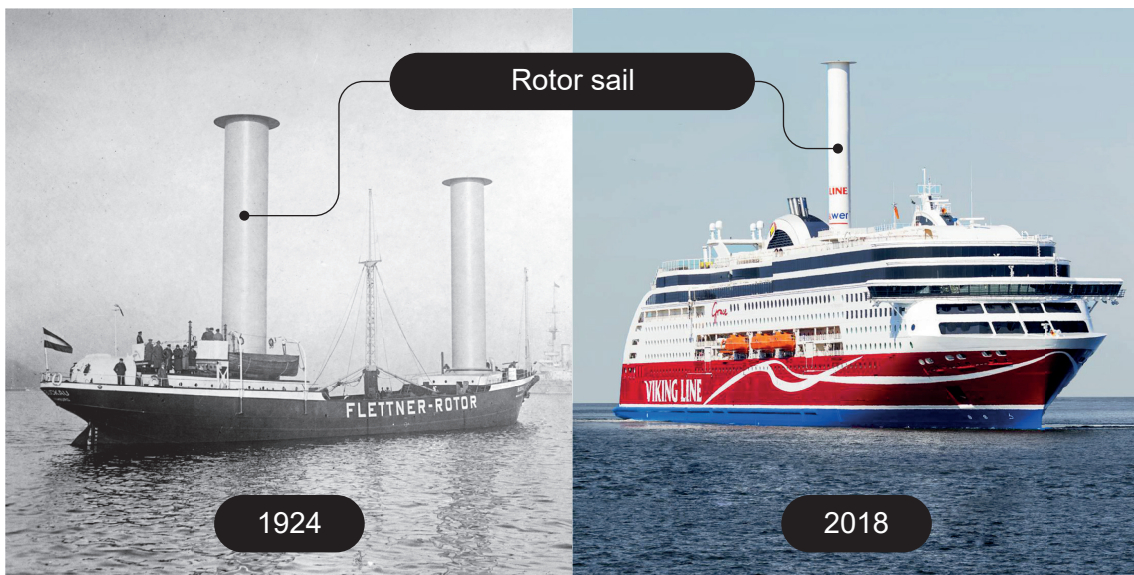
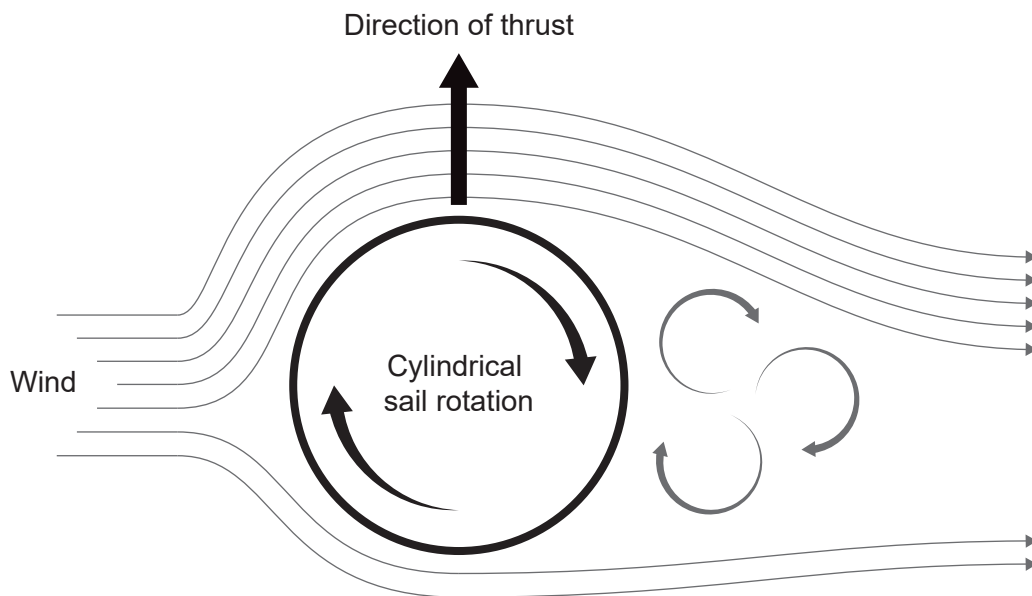


Figure 12: Thrust produced by the cylindrical rotor sail



(This question continues on the following page)



(Question 6 continued)

(a) Outline **one** driver for the use of clean technology to develop the rotor sail. [2]

.....

.....

.....

.....

(b) Explain why carbon glass fibre was chosen for the modern rotor sail. [3]

.....

.....

.....

.....

.....

.....

(This question continues on the following page)



7. The international patent pending JuNiki's® Double Neck® flask features a unique cap with two openings. One opening is narrow and the other is wider. Both openings are angled to allow for ease-of-use. The flask comes in two versions, one version with a body made from stainless steel and the other version made from borosilicate glass (Pyrex), see **Figure 13**. The flask also comes in a range of different sizes and finishes, see **Figure 14**.

Figure 13: Borosilicate glass JuNiki's® flask



Figure 14: JuNiki's® flask range



(This question continues on the following page)



24EP20

(Question 7 continued)

- (a) Outline the type of intellectual property (IP) required for the protection of the JuNiki's® flask cap design. [2]

.....

.....

.....

.....

- (b) Explain the mass production method used for the body of the borosilicate glass flask. [3]

.....

.....

.....

.....

.....

.....

(This question continues on the following page)



References:

- Figure 1** [environment software] © International Baccalaureate Organization 2020.
- Figure 2** [sustainability report] © International Baccalaureate Organization 2020.
- Figure 3** [energy consumed pie-chart] © International Baccalaureate Organization 2020.
- Figure 4** Image of the Anglepoise Original 1227 lamp shown with permission by Anglepoise Limited.
- Figure 5** The Agency of Design, 2010. *A 10-megajoule lamp*. Available at: <https://agencyofdesign.co.uk/projects/designing-with-energy>. With permission from The Agency of Design.
- Figure 6** Images provided with permission from Ultraleap.
- Figure 11** [Buckau ship] George Grantham Bain Collection, Prints & Photographs Division, Library of Congress, LC-DIG-ggbain-37764.
[Norsepower ship] © Norsepower Oy Ltd 2020.
- Figure 12** [thrust produced by the cylindrical rotor sail] © International Baccalaureate Organization 2020.
- Figure 13** [borosilicate glass JuNiki flask] Picture provided by Dr. Christian Kehlenbeck, JuNiki's Double Neck GmbH, Germany.
- Figure 14** [JuNiki flask range] Picture provided by Dr. Christian Kehlenbeck, JuNiki's Double Neck GmbH, Germany.



24EP24