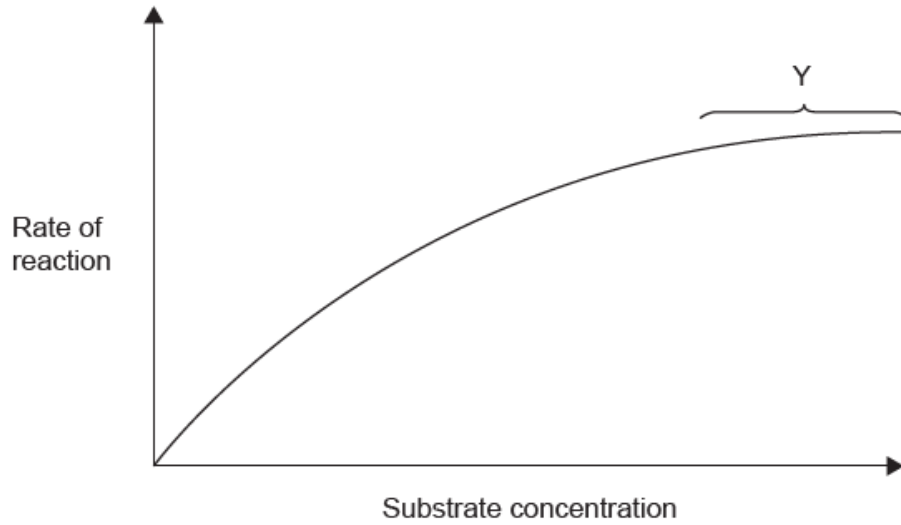

SL Paper 1

The graph shows the effect of increasing the substrate concentration on the rate of an enzyme-catalysed reaction. What is occurring during the phase indicated by section Y of the graph?



- A. The active site of the enzyme is saturated.
 - B. The enzyme becomes denatured.
 - C. The substrate concentration has risen too high.
 - D. The optimum rate is reached.
-