
SL Paper 1

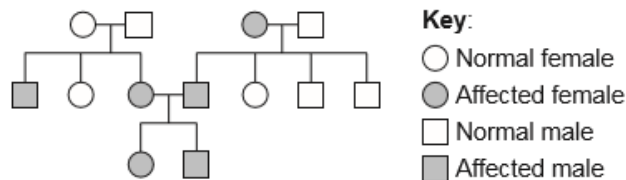
What happens in crossing over?

- A. Exchange of genetic material between homologous chromosomes
 - B. Exchange of genes during metaphase of mitosis
 - C. Random distribution of chromosomes during meiosis
 - D. Homologous chromosomes fail to separate during meiosis
-

During which stage of meiosis does crossing over usually occur?

- A. Prophase I
 - B. Metaphase I
 - C. Prophase II
 - D. Metaphase II
-

The diagram shows a pedigree chart.



What does it reveal about the inheritance of the blood disorder beta-thalassaemia?

- A. The allele is autosomal recessive.
 - B. The allele is autosomal dominant.
 - C. The allele is sex-linked.
 - D. The allele is co-dominant.
-

Which structure found in eukaryotes has a single membrane?

- A. Nucleus
 - B. Lysosome
 - C. Chloroplast
 - D. Mitochondrion
-

