

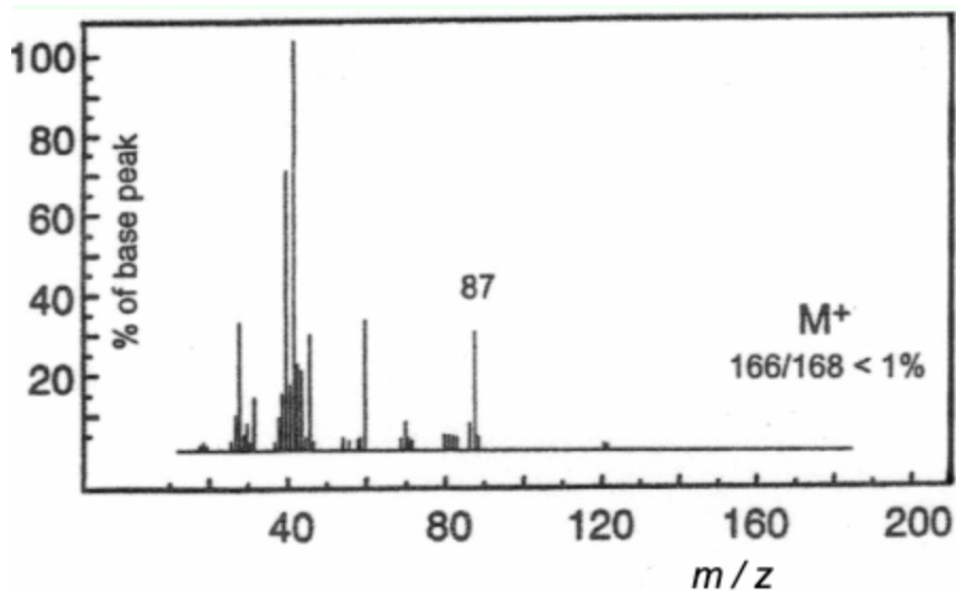
HL Spectroscopic identification of organic compounds: Question 11

Identify **Compound K** from the data (a – d) given and explain how you arrived at your answer

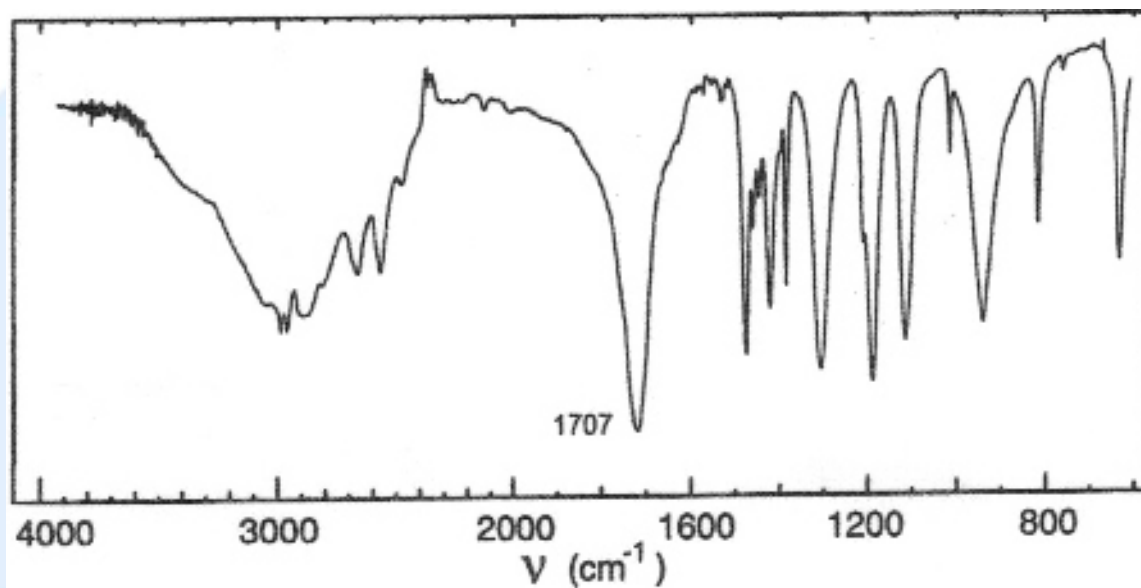
(a) Elemental analysis of **Compound K**.

Element	Percentage by mass
Carbon	28.76
Hydrogen	4.23
Oxygen	19.16
Bromine	47.85

(b) Mass spectrum of **Compound K**



(c) Infrared spectrum of **Compound K**



(d) ¹H NMR spectrum of **Compound K**

