



**GEOGRAPHY  
HIGHER LEVEL AND STANDARD LEVEL  
PAPER 2 – RESOURCES BOOKLET**

Friday 16 May 2003 (morning)

---

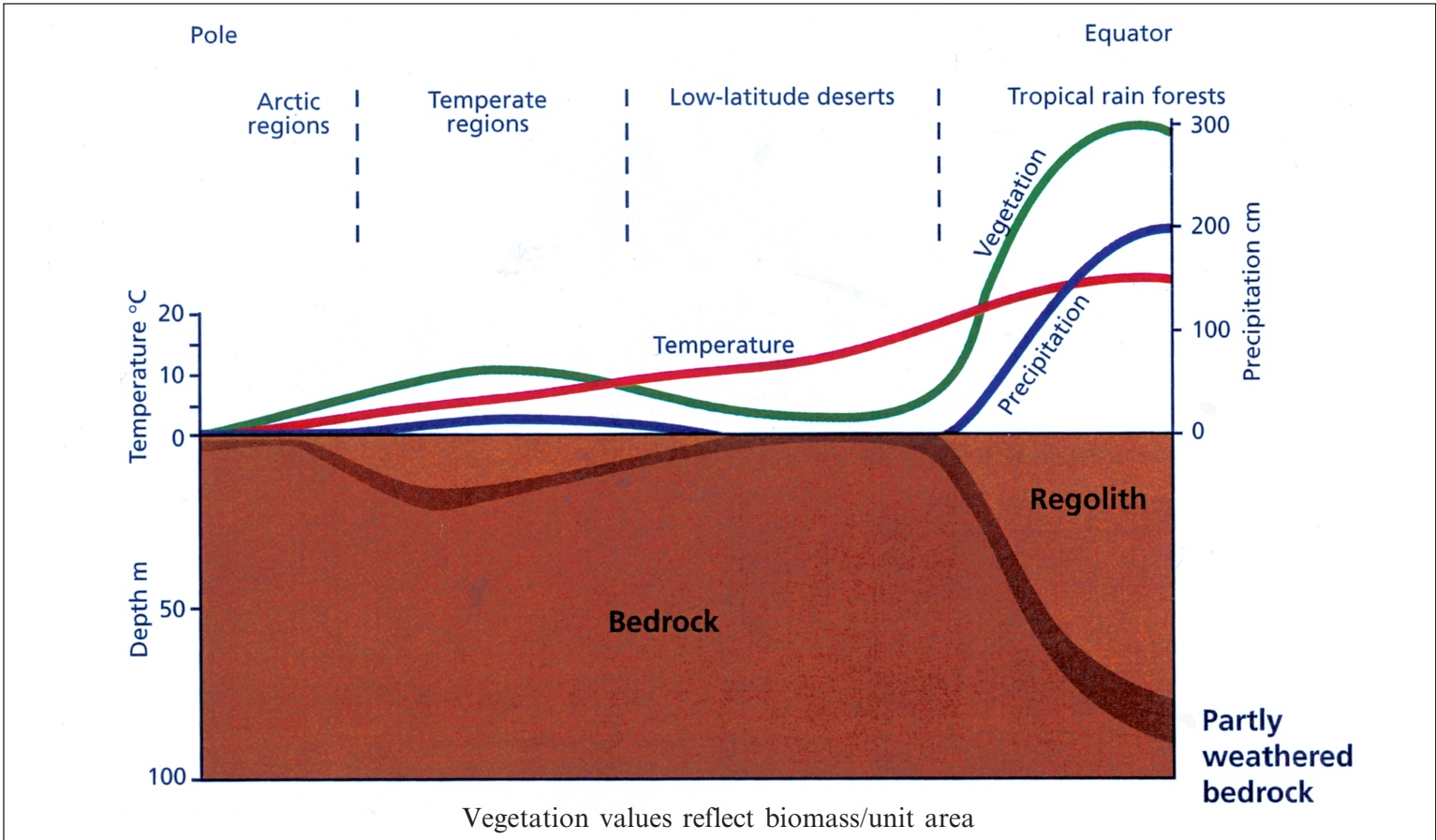
**INSTRUCTIONS TO CANDIDATES**

- Do not open this resources booklet until instructed to do so.
- Use the resources as appropriate to the questions in paper 2.

A4. Lithospheric processes and hazards

(b) Structured question

The diagram shows the depth of regolith at different latitudes and some of the factors influencing it.



[Source: I Cook et al., *Geography in Focus* (2000)]

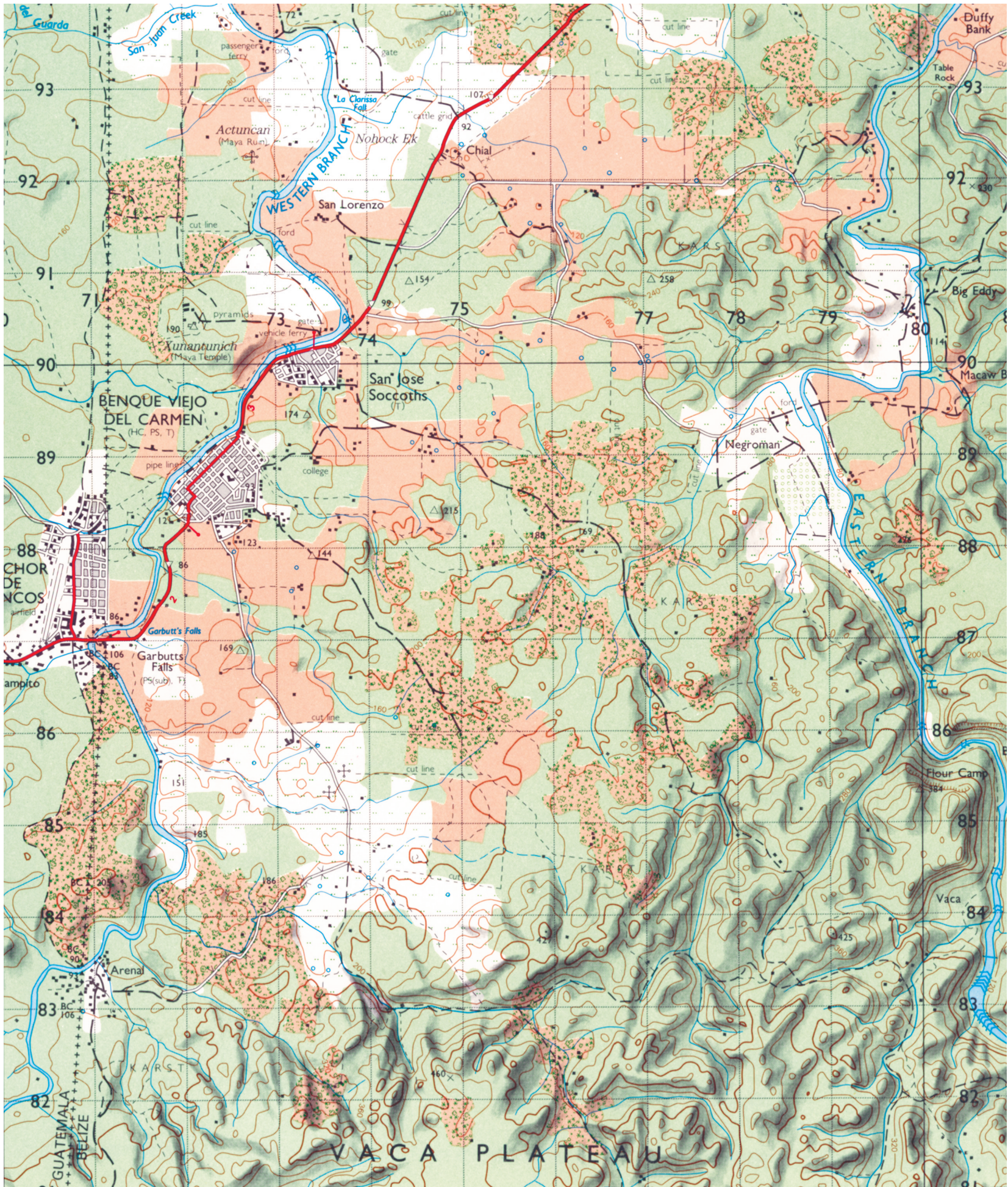
C11. Topographic mapping

The map and photograph extracts show part of Belize.



© Crown Copyright/MOD

LEGEND			
CULTURE		MISCELLANEOUS	
Built-up area		International boundary	
Village		District boundary	
Buildings. Landmark building		Boundary cairn. Boundary pillar	
Main route-sealed		Bridge. Culvert. Ford	
Main route-unsealed, with distance in kms between markers		Causeway. Bridge liable to flood	
Secondary route-sealed		Ruin. Tank	
Secondary route-unsealed		Obstruction. Lighthouse	
Other route. Track		Cut line	
Route under construction		Fence line	
Trail. Footpath		Landmark area	
DRAINAGE		Danger area	
Shoreline: definite, indefinite, man made		Nature reserve	
Watercourse with flow arrow		RELIEF	
Indefinite watercourse		Contour-index	
Falls. Rapids. Dammed stream		Contour-intermediate	
Ditch, canal, drain		Depression	
Lake. Reservoir. Dam		Trig: major, minor	
Land subject to inundation		Spot height. Estimated elevation	
Areas of numerous hollows and swamps		Cliff (over 100m)	
Water tank. Well/ Waterhole. Spring		Cliff or escarpment (less than 100m)	
Reef. Rock. Rock awash		Quarry or mine	
Foreshore flats		Levee. Cave. Sink hole	
Filter beds etc.		Sand, mud, gravel	
VEGETATION			
High jungle			
Medium jungle			
Pine woods			
Scrub			
Plantation			
Pastureland			
Croplands: regular, temporal			
Mangrove			
Tidal grass swamp			
Swamp: grass, tree/bush			



© Commissioner of Lands and Surveys, Belize

SCALE 1:50,000



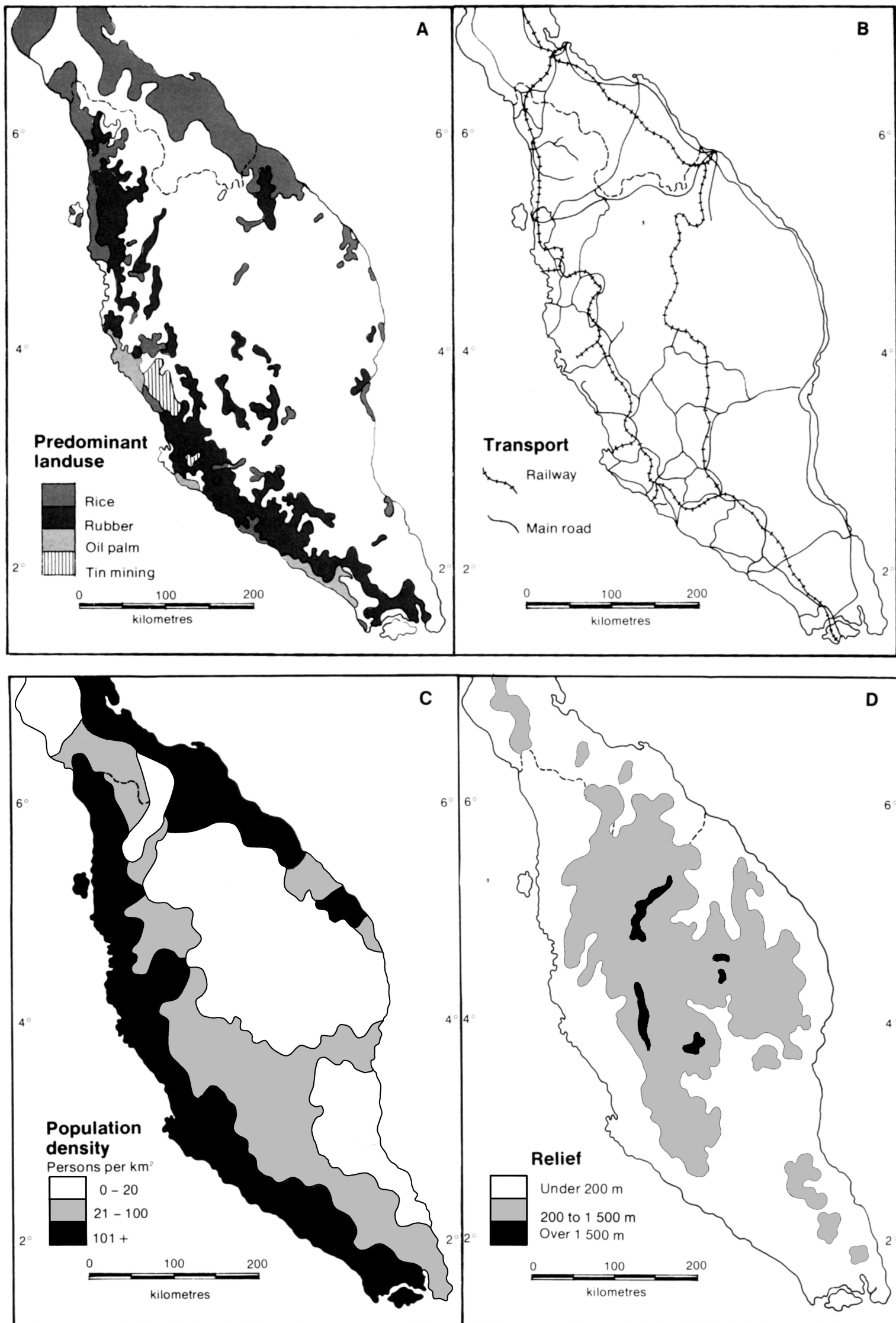
CONTOUR INTERVAL 40 METRES

ELEVATIONS IN METRES

## B7. Contemporary issues in geographic regions

### (b) Structured question

The four maps show aspects of the Malay Peninsula in western Malaysia.



[Source: J C R Camm and P G Irwin, (1982), *Land, Man, Region: Regional systems of interacting systems*, Melbourne: Longman-Cheshire, pages 120–121]