

GEOGRAPHY
HIGHER LEVEL AND STANDARD LEVEL
PAPER 2 – RESOURCES BOOKLET

Monday 7 November 2005 (morning)

INSTRUCTIONS TO CANDIDATES

- Do not open this resources booklet until instructed to do so.
- Use the resources as appropriate to the questions in paper 2.

C11. Topographic mapping

The map extract opposite shows an area of Mayotte, an island in the Mozambique Channel in the Indian Ocean. Mayotte has a tropical, humid climate with monsoon rains from November to May. The map extract has a scale of 1:50 000. The aerial photograph below shows part of Petite-Terre; an island off Mayotte.



A1. Drainage basins and their management

(b) Structured question

The two photographs below illustrate river processes, which are typical in areas of fluvial deposition.

Photograph A



[© Yann Arthus-Bertrand – Argentina, Leona River]

Photograph B

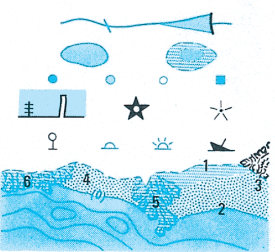




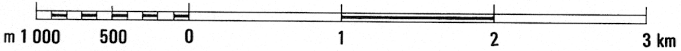
MAP LEGEND

Paved, classified principal road	
Paved/unpaved classified secondary road	
Regularly maintained road – Irregularly maintained road	
Seasonal track – Trail	
Street, urban alley – Road closed	
Road designation: national highway – local road	
Administrative centre	
Approximate town boundary	
Population in thousands of inhabitants (1991 census)	
Built-up area: urban core	
1. Houses – 2. Building of interest	
Slash triangulation point	
Friday mosque – Mosque – Church	
Muslim/Christian cemetery	
Wall, boundary – Fence	
Permanent watercourse – Temporary watercourse	
Bridge – Footbridge – Ford	

Waterfall – Dam	
Permanent water – Floodable land	
Elevated tank – Reservoir, rainwater tank – Wash house – Pumping station	
Pontoon – Pier/jetty – Lighthouse – Light	
Beacon – Buoy – Light buoy – wreck	
1. Low-water line	
2. High-water line – 3. Rocks	
Foreshore: 4. Damp sand, silt – 5. Coral, submerged rocks – 6. Coral reef	
Contour lines, 20 m intervals – Depression	
Basin – Earth/rock bank – Pile of pebbles	
Bare and gullied ground	
Vegetation limit	
Forest reserve limit	
Coconut tree – Banana tree – Ylang ylang – Mangrove – Bamboo	



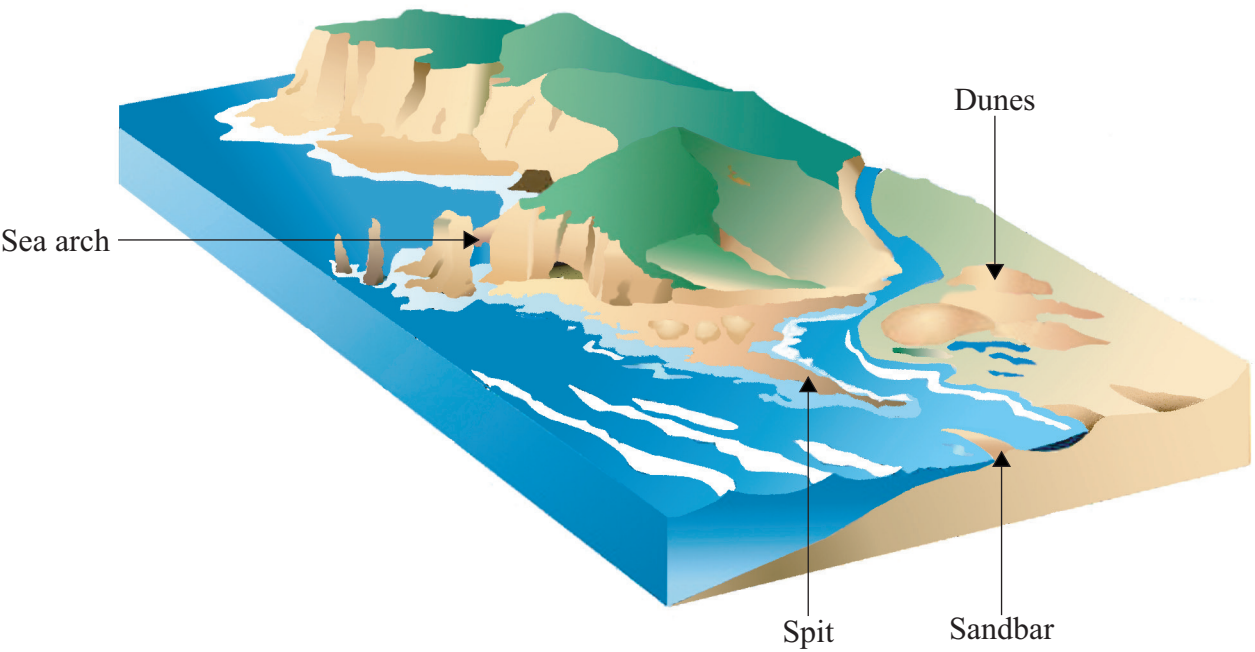
SCALE 1:50 000



A2. Coasts and their management

(b) Structured question

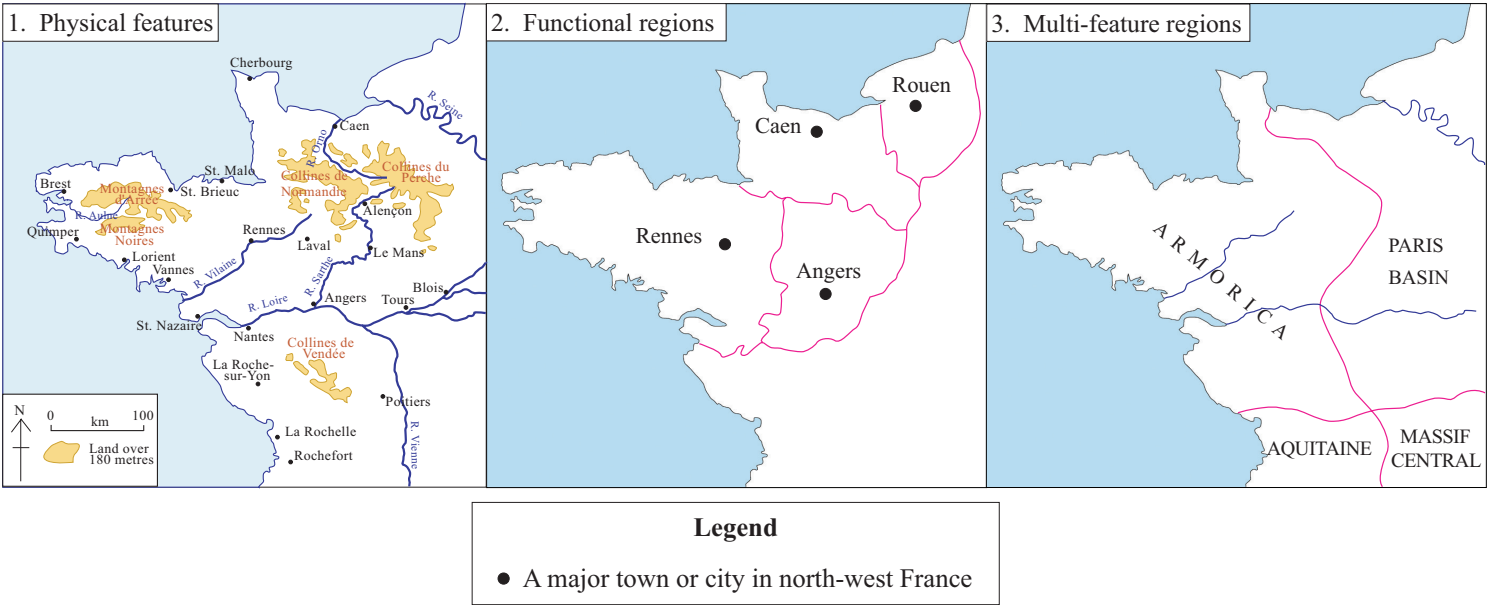
The diagram below shows some coastal features.



B7. Contemporary issues in geographical regions

(b) Structured question

Map 1 shows some basic geographical features of north-west France. Maps 2 and 3 show alternative regional divisions of the same area.

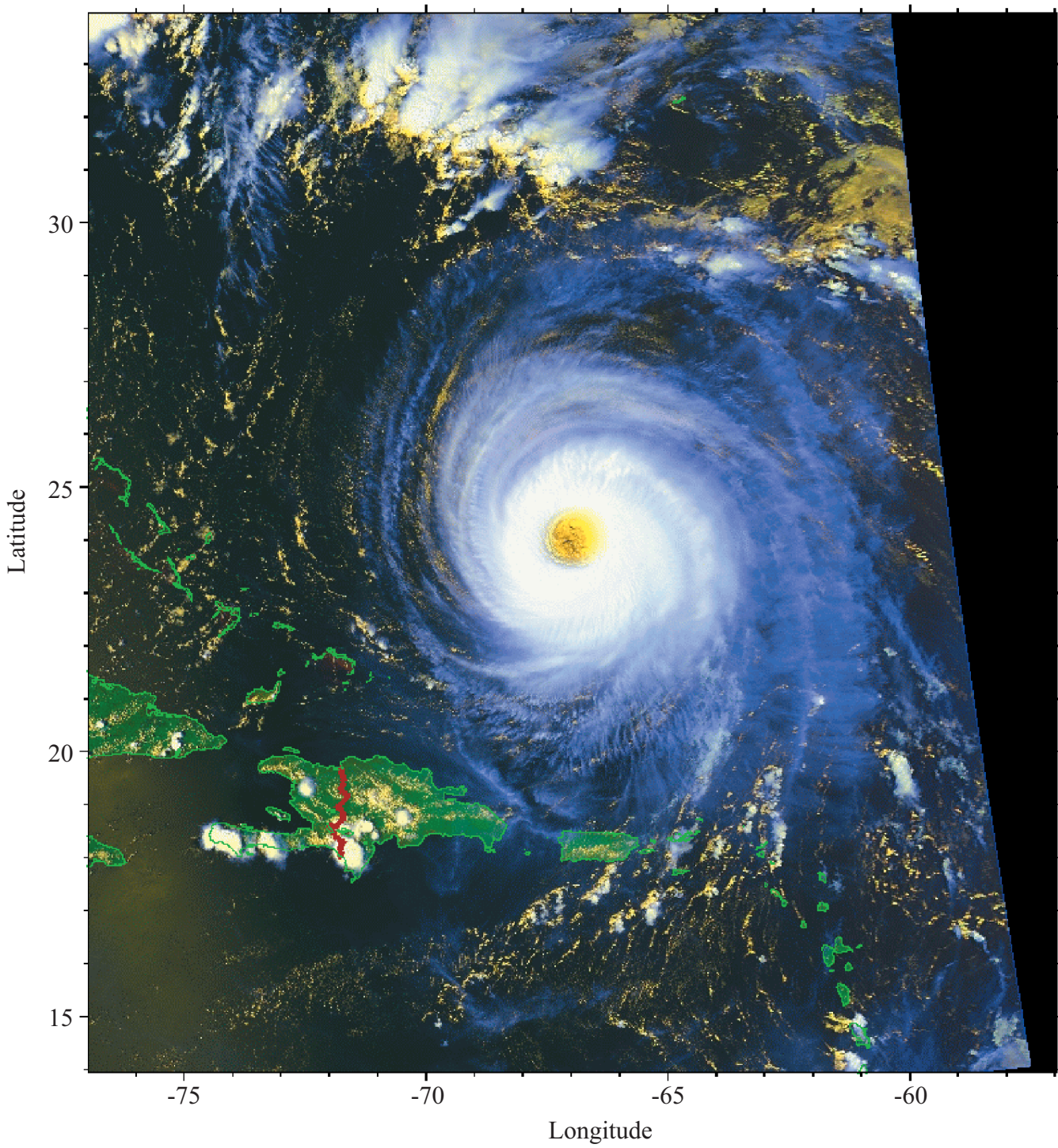


[Source: Map 1 – Harry Robinson (1968) *Western Europe*; Maps 2 and 3 – Oswald Hill (1964) *The Frontiers of Geography*. All redrawn with modifications.]

A6. Climatic hazards and change

(b) Structured question

The diagram below is a satellite image of hurricane Isabel.



[Source: Ray Sterner / Applied Physics Laboratory / The Johns Hopkins University, licensed by North Star Science and Technology, LLC]